

UX/UI portfolio

Victoria Ben-Chivar

To see more of my portfolio visit
<http://victoriapben.com/designandillustrations/design-portfolio/>

 ADDTRACK

Addtrack analysis software (<http://web.addtrack.se/>)

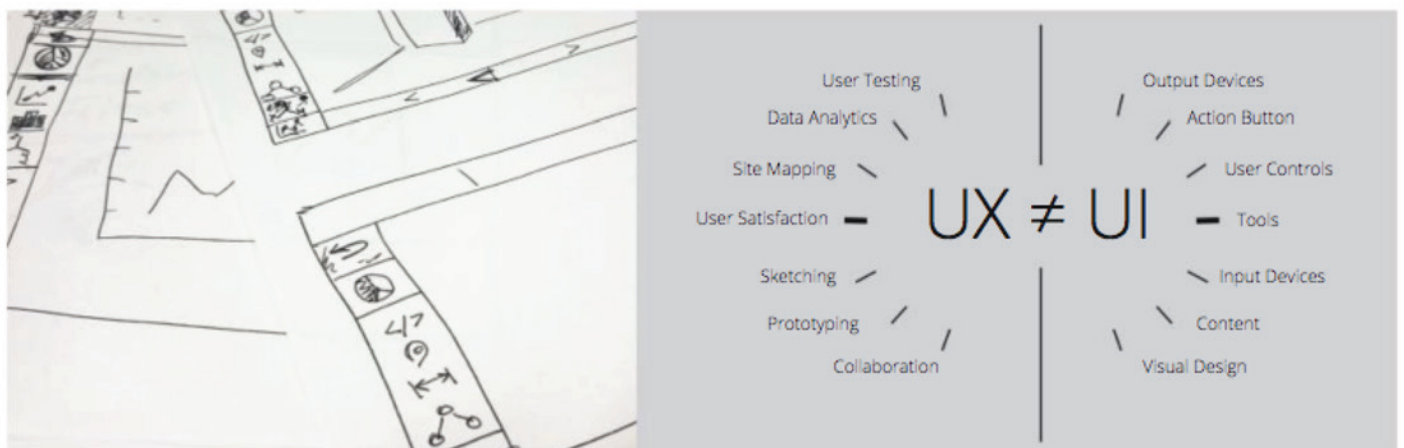
Addtrack is a software used to analyse product conditions and flows. This software has been mainly used for transportation companies, but can be easily used to analyse other areas. Global companies like Bombardier, Sandvik, GreenCargo and Hyundai use this tool.

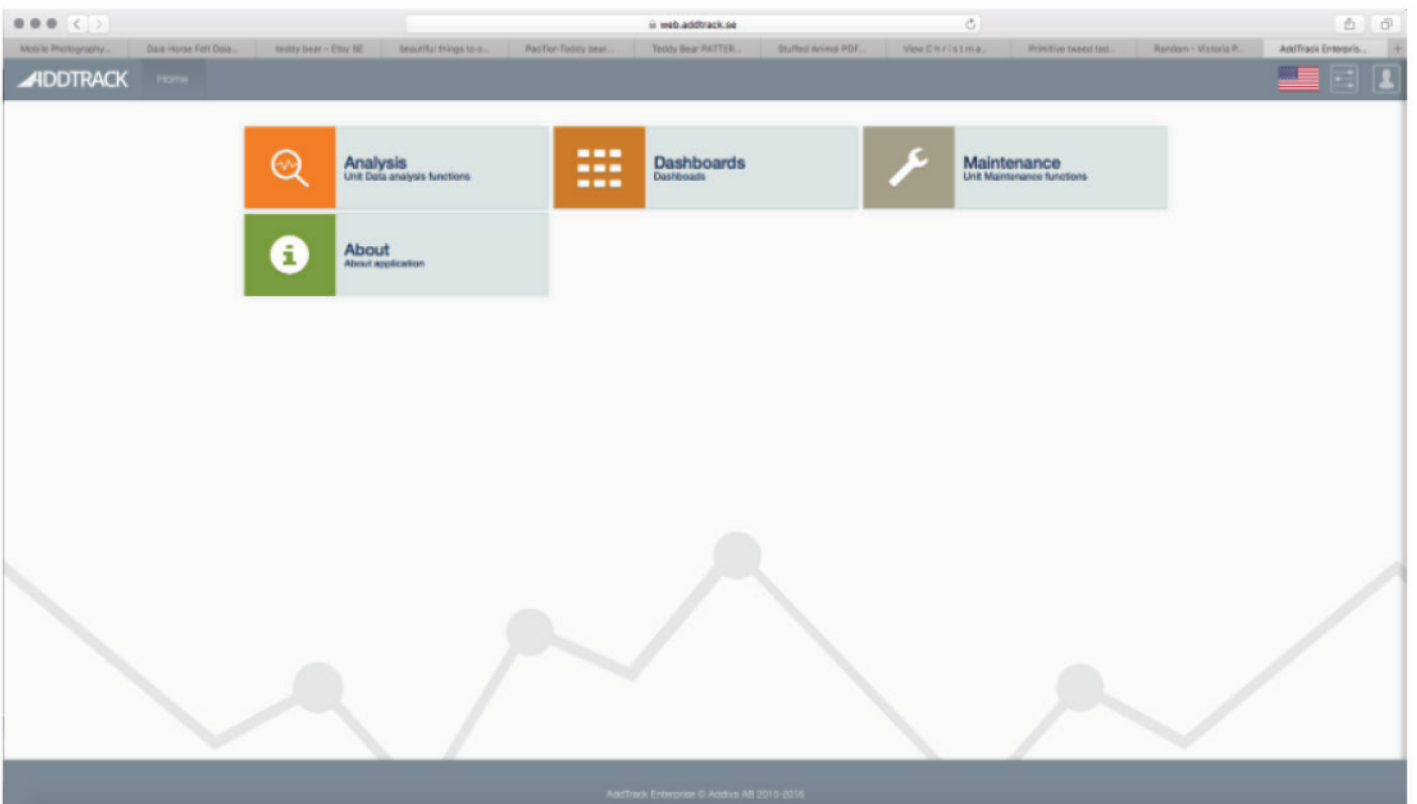
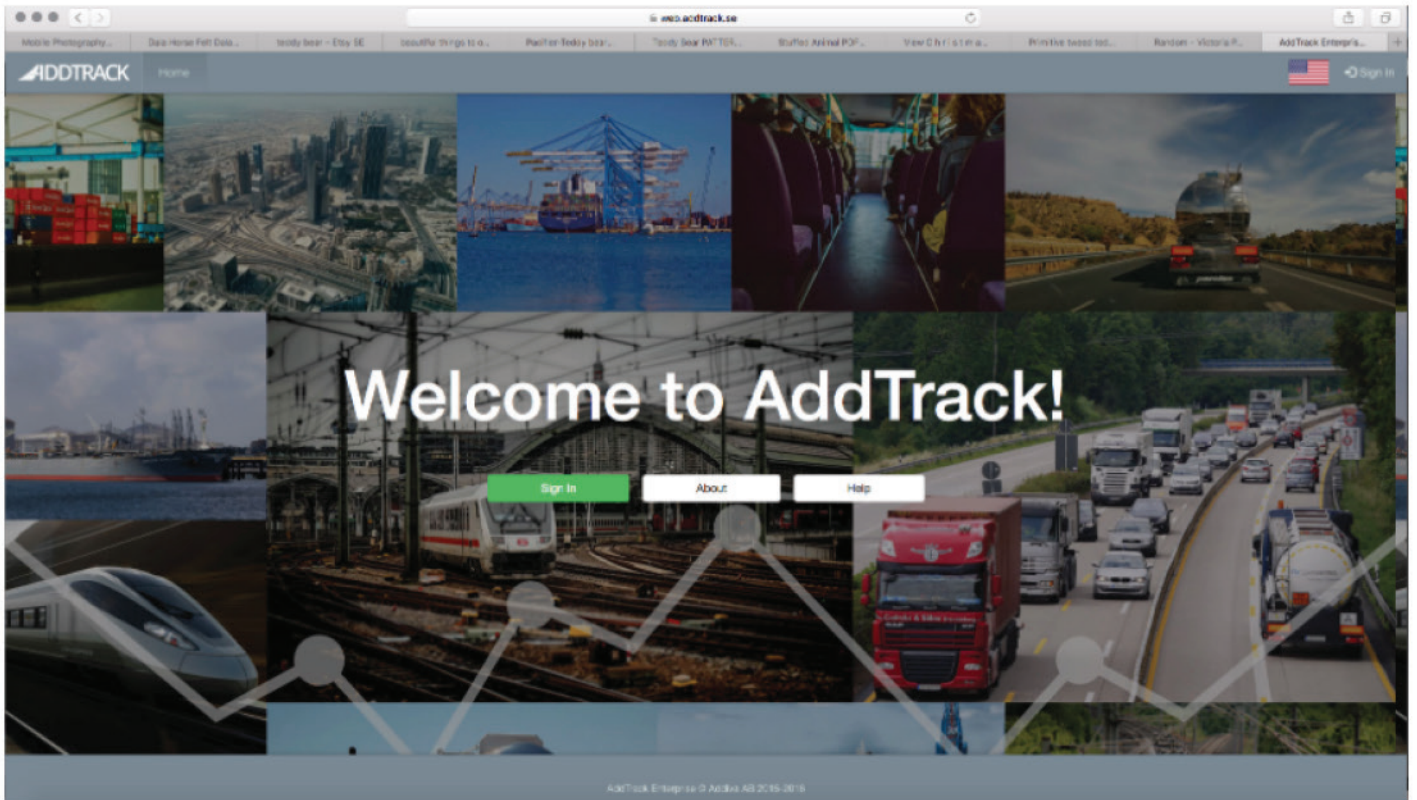
The aim of the project was to make the software's usability more simple, pedagogical and responsive. At the same time make the product have customisable interface and give it a more flat design feeling. The web application is based on Bootstrap which has made these functions much easier.

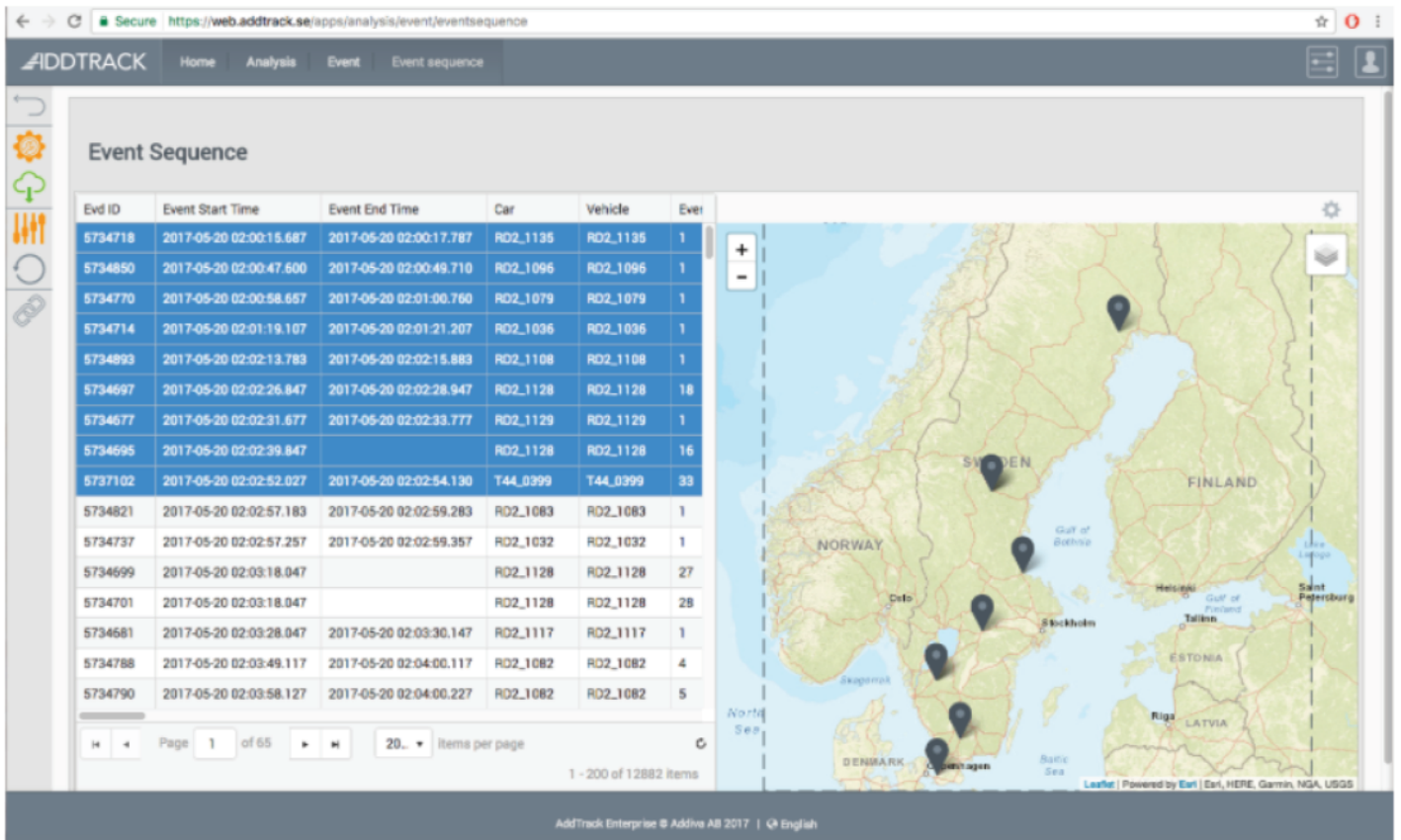
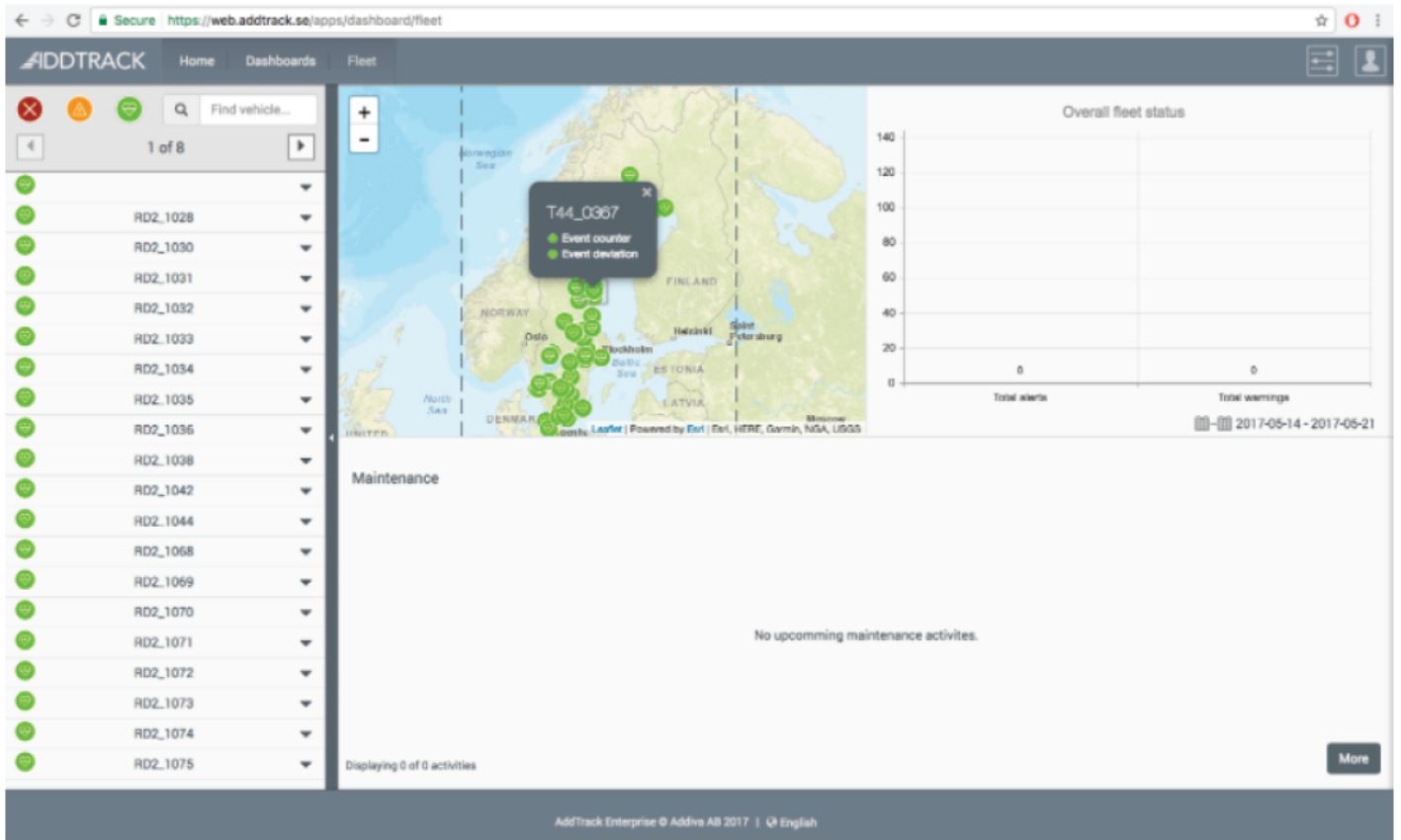
Addtrack was redesigned completely, as it was performing poorly in usability tests and was just hard to use in it's first original state. The first version of this software was made by engineers for engineers, but today it is made understandable for even those who are not engineers.

My role in this project was to:

1. Test and interview regular and potential users
2. Interview super users
3. Conduct workshops finding pain points the latest version
4. Create a design concept and hi-fi prototypes
5. Usability test hi-fi prototypes
6. Collaborate with the developers during implementation
7. Regularly consult product owners and developers along the way to ensure that the solution is feasible
8. Make use of the analytics data after the launch to further improve the system.





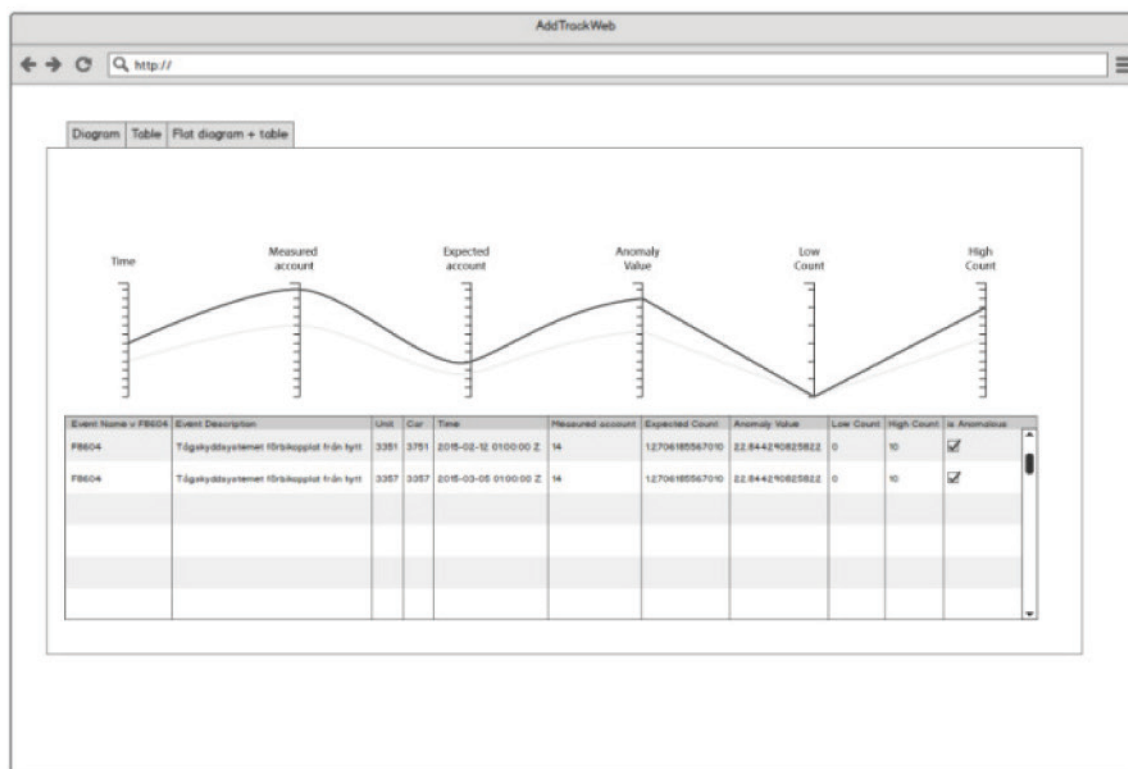


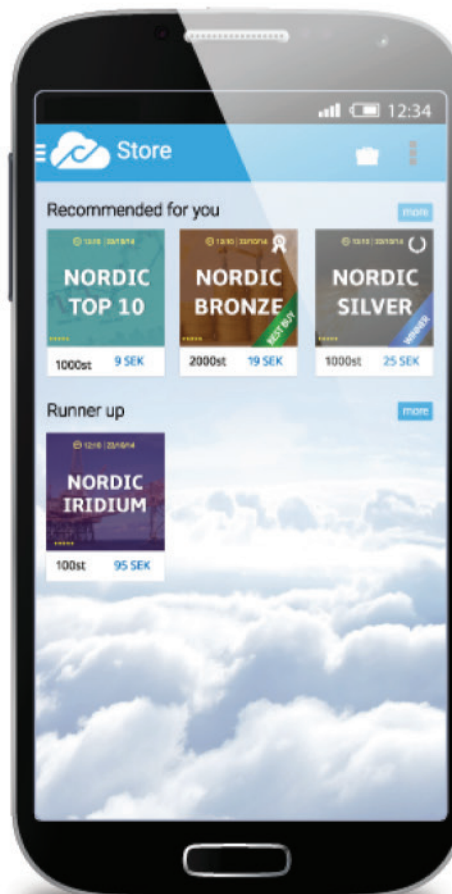
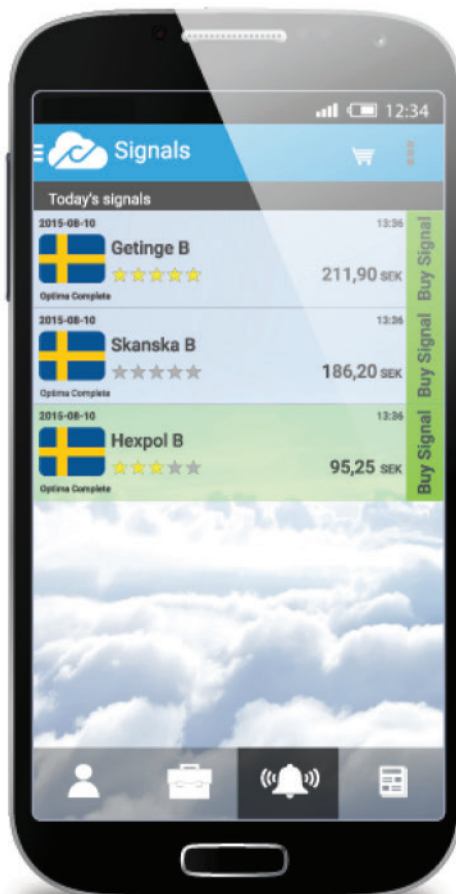
The screenshot shows the 'AddTrackWeb' application interface. At the top, there is a browser address bar with 'http://'. Below it, a navigation bar contains three tabs: 'Diagram', 'Table', and 'Flat diagram + table'. The main content area displays a 3D bar chart visualization of train event data. The chart has a vertical axis labeled 'Time' and a horizontal axis labeled 'Train'. The data is represented by bars for each train ID (1 through 25). The bars are color-coded: orange for 'Anomaly above expected count', blue for 'Few anomalous events', and grey for 'Expected count'. The chart shows significant anomalies for train IDs 1 and 2, with train 1 having the highest count. A legend on the left side of the chart area defines the color coding.

Time

Train

Anomaly above expected count
 Few anomalous events
 Expected count





Mobile Stock exchange Signal App "Optima" from Cumula (<https://play.google.com/store/apps/details?id=se.cumula.optima>)

Apart from being the UI and UX designer, I also created the graphic profile, including ad photos and promo videos.

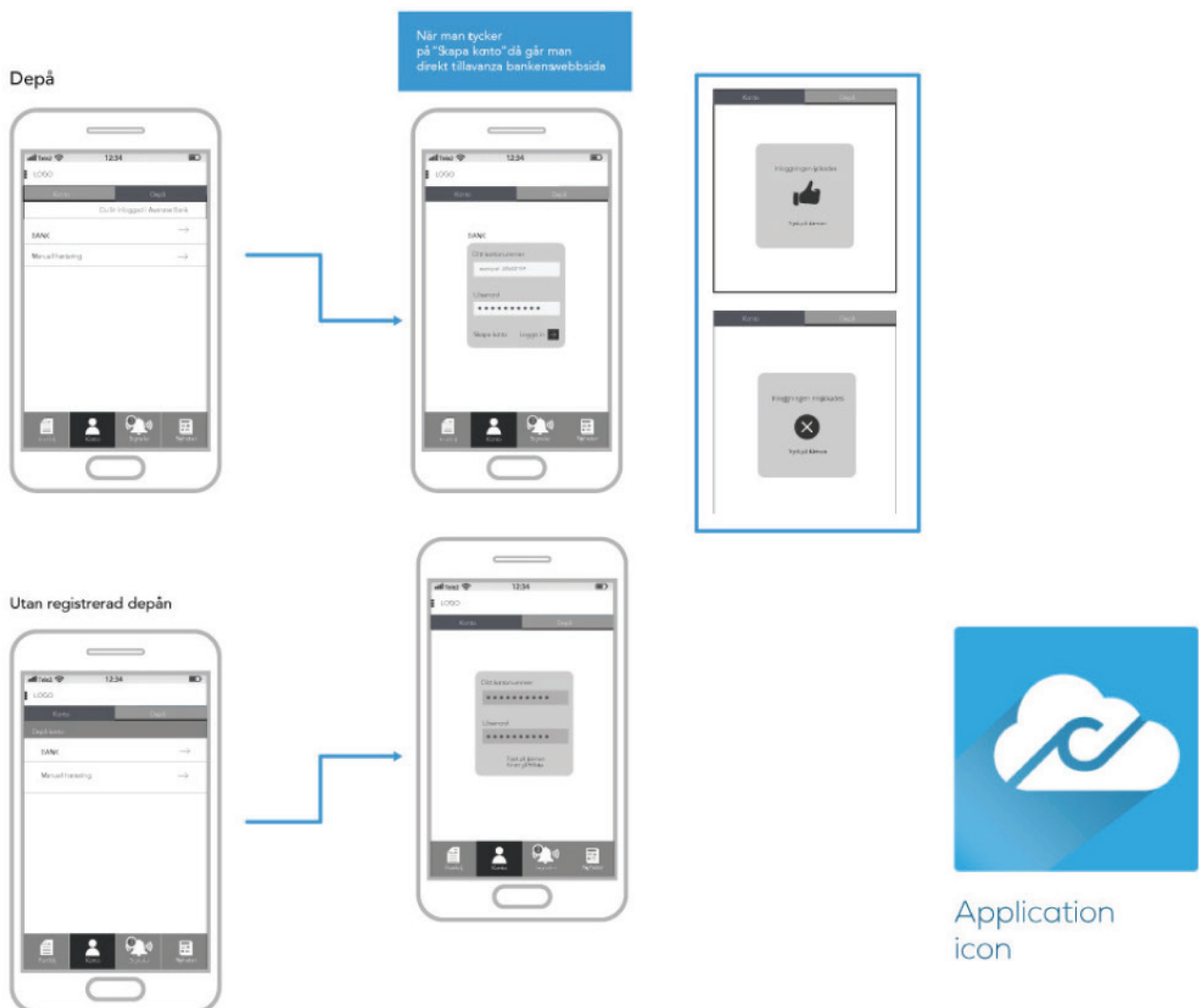
Creation and release of an Android application.

The idea behind this was to design an application for consumers from age 25 and above to easily buy and sell stocks through their mobile phone.

The process of this project:

1. Analysis and benchmarking;
2. Developing personas and writing scenarios;
3. Concept (flow diagram and data model concepts);
4. Creating a paper prototype and usability testing;
5. Wireframing;
6. Hi-fi prototype
7. Conduct workshops

Mobile app - User flow chart for registration example



WIREFRAMES

Cumula Optima

- 1 Download application through Google Play.

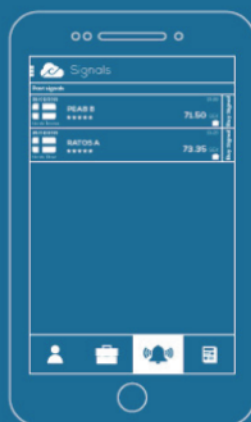


After download find application icon on mobile device desktop.



- 2 To access portfolios log in to Facebook or Google Plus.

Note: All Gmail accounts have access to Google Plus by default.



- 3 Once logged in notice signals from included free portfolios. Viewed signals indicate when to buy or sell shares.



Note: Every signal is labelled to the right corner with Buy Signal or Sell Signal.



- 4 Navigate to portfolio to view portfolios and content by pressing the portfolio button.



To purchase more portfolios visit Cumula store when activated in Portfolio or find Store in the side bar.



Notice the wagon symbol to the right top corner and side bar symbol to the left top corner of application.

- 5 Click a Buy or Sell signal to navigate to BUY/SELL view and get more information about share.

- 6 The BUY/SELL view will have a **BUY** or **SELL** button only if connected to **Avanza Bank**. Log in and register.



If you are registered to another bank you will need to complete the transaction manually via online banking or by phone.

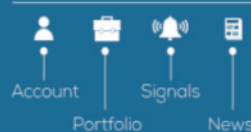
Note: Cumula AB has only an agreement with Avanza Bank. Agreements with all banks will be considered in the future.



- 7 To view holding account notice the first button to the left in the bottom navigation bar.

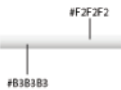


Navigation bar description



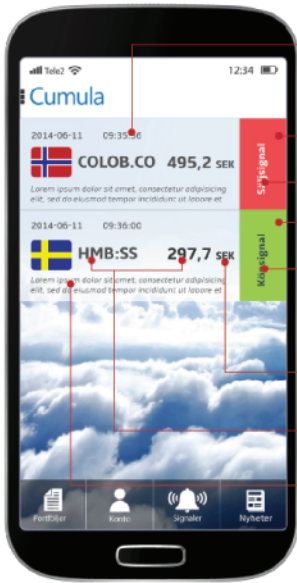
Cumula App guideline 1

Gradient

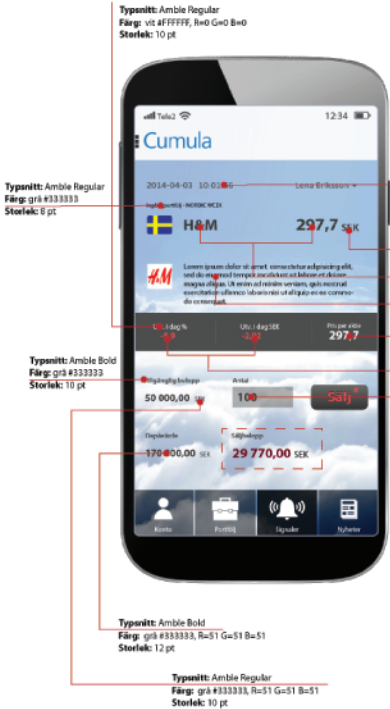
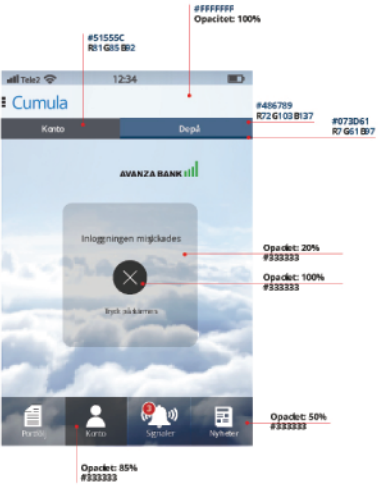
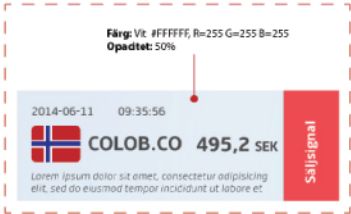


Färgkod

Färg: röd #F14950	Färg: blå #073D61	Färg: blågrå #51555C
Färg: röd #8AF85A	Färg: blå #147ABE	Färg: grå #4D4D4D
Färg: grå #333333	Färg: blå #63738A	Färg: mörkröd #6A0D1D
Färg: grå #7F777F	Färg: mörkgrön #3F8122	
Färg: grå #4D4D4D		

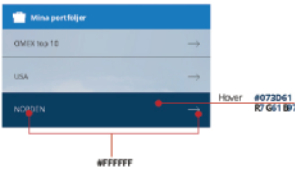
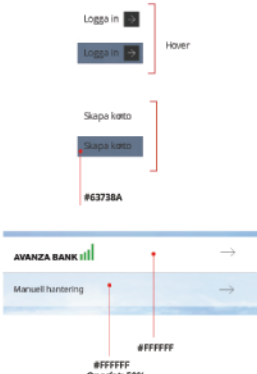


Typsnitt: Ambie Regular Färg: grå #333333, R=51 G=51 B=51 Storlek: 10 pt
Färg: röd #F14950, R=241 G=73 B=80
Typsnitt: Ambie Bold Färg: vit #FFFFFF, R=255 G=255 B=255 Storlek: 12 pt
Färg: grön #8AF85A, R=138 G=248 B=90
Typsnitt: Ambie Bold Färg: grå #333333, R=51 G=51 B=51 Storlek: 12 pt
Typsnitt: Ambie Bold Färg: grå #333333, R=51 G=51 B=51 Storlek: 12 pt
Typsnitt: Ambie Bold Färg: grå #333333, R=51 G=51 B=51 Storlek: 18 pt
Typsnitt: Ambie Light Italic Färg: grå #333333, R=51 G=51 B=51 Storlek: 9 pt



Typsnitt: Ambie Bold Färg: vit #FFFFFF, R=255 G=255 B=255 Storlek: 14 pt	Typsnitt: Ambie Bold Färg: grön #8AF85A, R=138 G=248 B=90 Storlek: 14 pt	Typsnitt: Ambie Bold Färg: grön #8AF85A, R=138 G=248 B=90 Storlek: 12 pt
Typsnitt: Ambie Regular Färg: grå #333333 Storlek: 10 pt	Typsnitt: Ambie Bold Färg: grå #333333, R=51 G=51 B=51 Storlek: 12 pt	Typsnitt: Ambie Light Italic Färg: grå #333333, R=51 G=51 B=51 Storlek: 9 pt
Typsnitt: Ambie Bold Färg: grå #333333, R=51 G=51 B=51 Storlek: 14 pt	Typsnitt: Ambie Bold Färg: grå #333333, R=51 G=51 B=51 Storlek: 14 pt	Typsnitt: Ambie Bold Färg: grå #333333, R=51 G=51 B=51 Storlek: 14 pt
Typsnitt: Ambie Regular Färg: grå #333333, R=51 G=51 B=51 Storlek: 12 pt	Typsnitt: Ambie Regular Färg: grå #333333, R=51 G=51 B=51 Storlek: 12 pt	Typsnitt: Ambie Regular Färg: grå #333333, R=51 G=51 B=51 Storlek: 12 pt
Typsnitt: Ambie Bold Färg: röd #F14950, R=241 G=73 B=80 Storlek: 14 pt	Typsnitt: Ambie Bold Färg: röd #F14950, R=241 G=73 B=80 Storlek: 14 pt	Typsnitt: Ambie Bold Färg: röd #F14950, R=241 G=73 B=80 Storlek: 14 pt

Knappar



Achievo

A thick, red, brushstroke-style underline that spans the width of the word 'Achievo'.

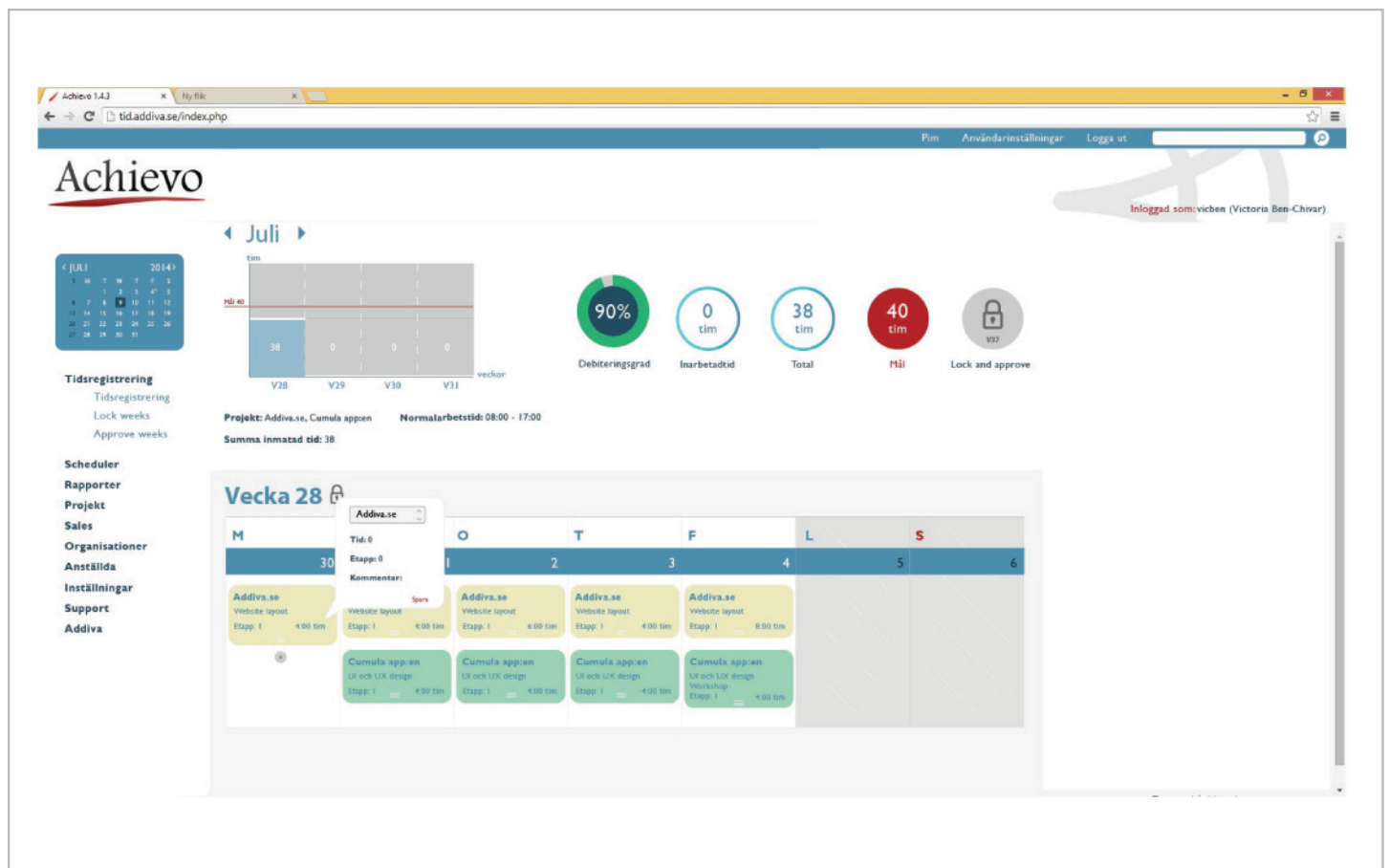
Achievo time registration web application (<http://open-source-project-management-tools.blogspot.se/2007/06/achievo.html>)

Achievo is an open source software with free customisable opportunities. My task in this project was to research pain points in the current version and replicate a hi-fi prototype with better user experience.

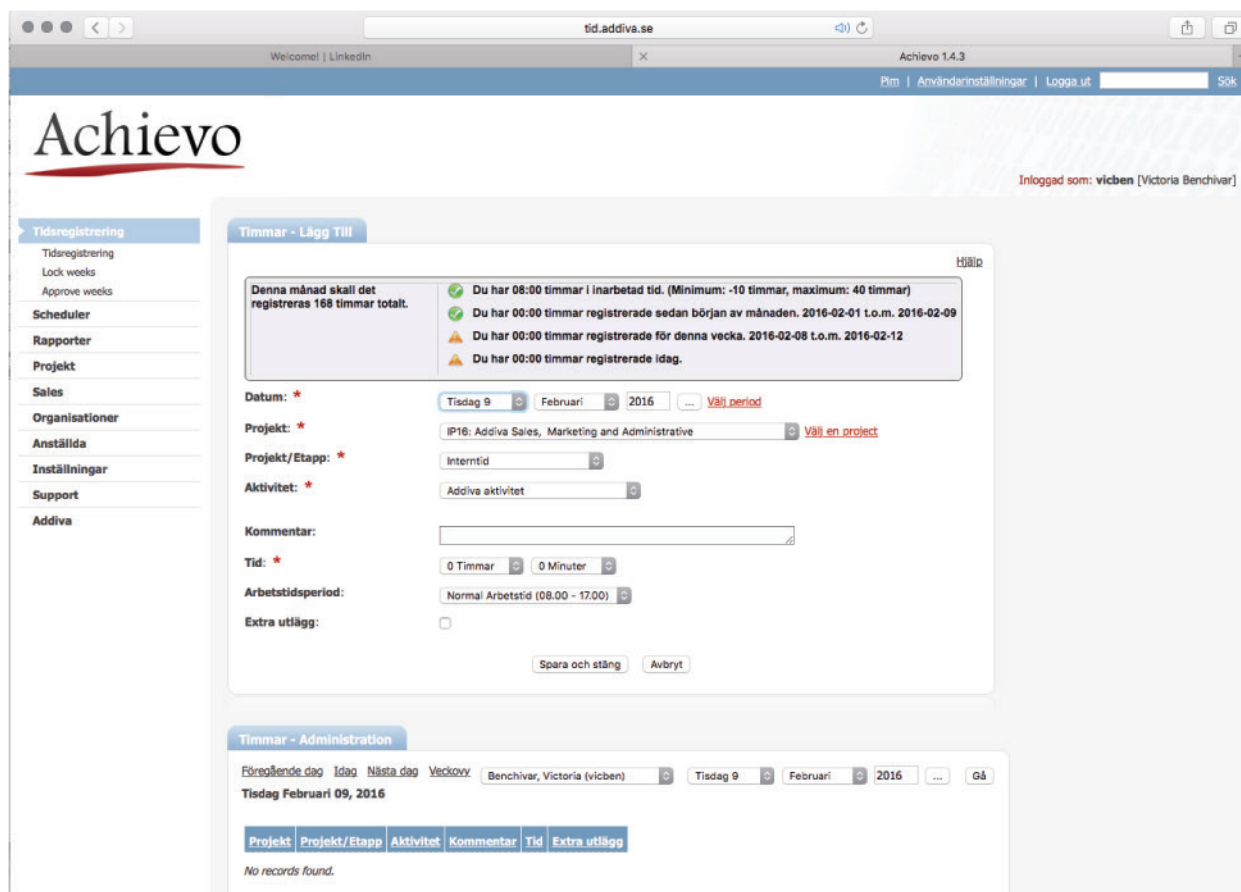
The process of this project:

1. Test and interview regular and potential users
2. Concept
3. Creating prototype and usability testing
4. Collaborate with the developers during implementation
5. Regularly consult product owners and developers along the way to ensure that the solution is feasible.

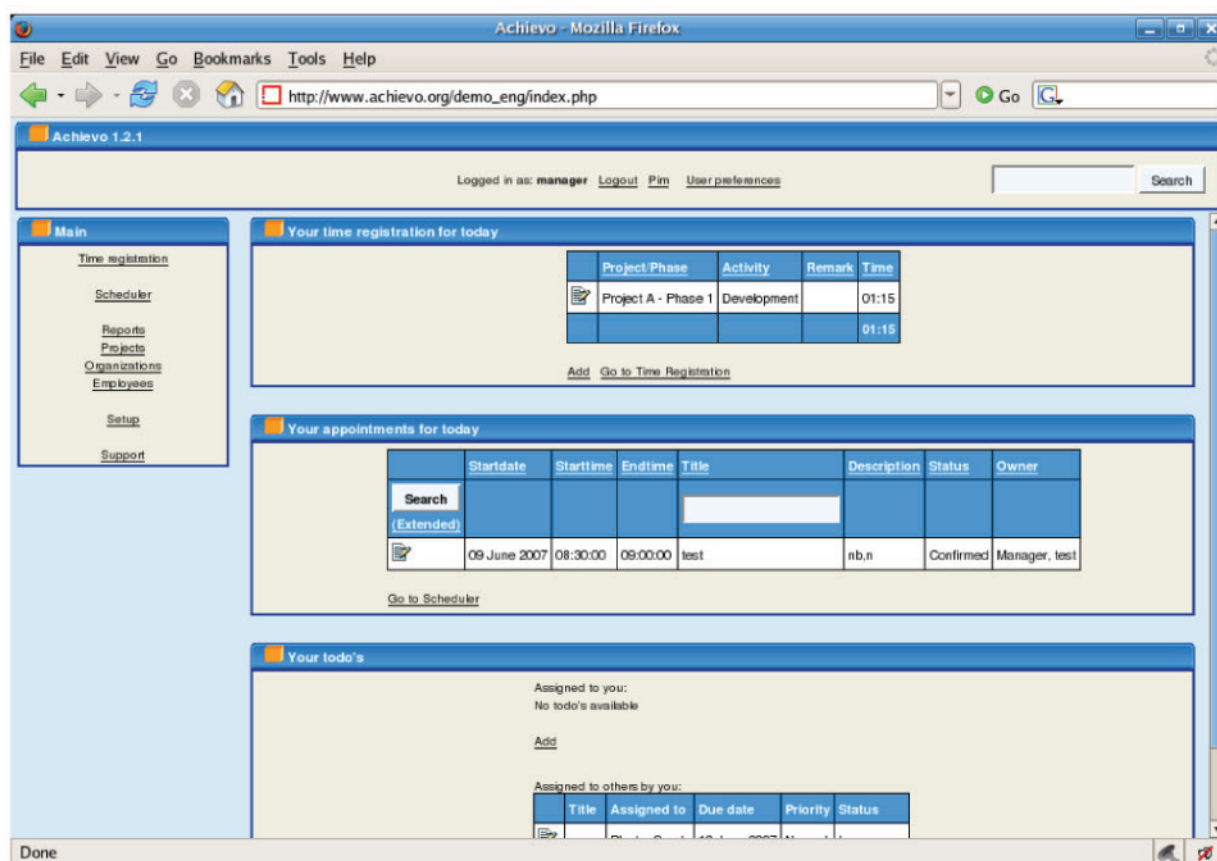
New updated version



Earlier version before new



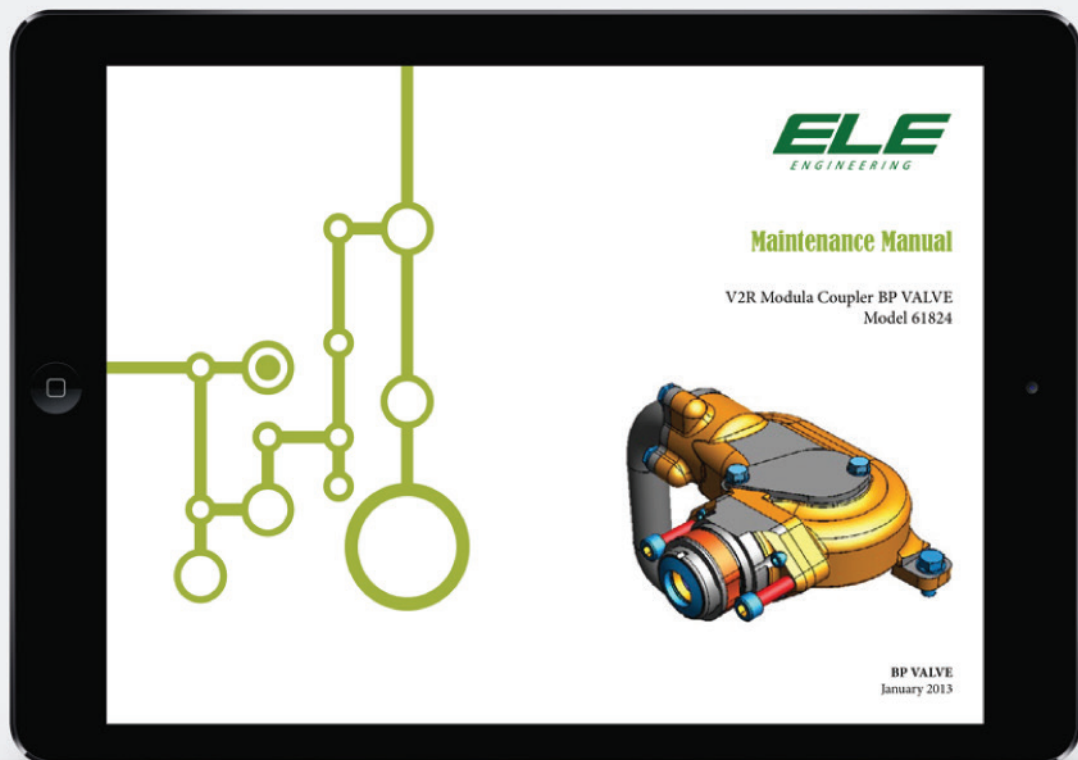
Original version




ELE Engineering Maintenance manual

The aim of the project was to make the manual's usability more interactive and possible to be used on tablets and mobile phones.

1. Test and interview regular and potential users;
2. Developing personas and writing scenarios;
3. Concept (flow diagram and data model concepts);
4. Wireframing;
5. Hi-fi prototype;
6. Launching manual in the cloud.



ILLUSTRATED PARTS CATALOGUE

Item	Part number	BOM Structure	Unit QTY	Item QTY	Preview
Hex cap screw	5058008065_0_5	Normal	Each	4	
Valve body	1007966_5_17	Normal	Each	1	
Spring solution	1006675_-_5	Normal	Each	1	
Hex cap screw	5058008065_0_5	Normal	Each	4	
Valve body	1007966_5_17	Normal	Each	1	
Spring solution	1006675_-_5	Normal	Each	1	
Hex cap screw	5058008065_0_5	Normal	Each	4	
Valve body	1007966_5_17	Normal	Each	1	
Spring solution	1006675_-_5	Normal	Each	1	
Hex cap screw	5058008065_0_5	Normal	Each	4	
Valve body	1007966_5_17	Normal	Each	1	
Spring solution	1006675_-_5	Normal	Each	1	
Hex cap screw	5058008065_0_5	Normal	Each	4	
Valve body	1007966_5_17	Normal	Each	1	
Spring solution	1006675_-_5	Normal	Each	1	
Hex cap screw	5058008065_0_5	Normal	Each	4	
Valve body	1007966_5_17	Normal	Each	1	
Spring solution	1006675_-_5	Normal	Each	1	
Hex cap screw	5058008065_0_5	Normal	Each	4	
Valve body	1007966_5_17	Normal	Each	1	

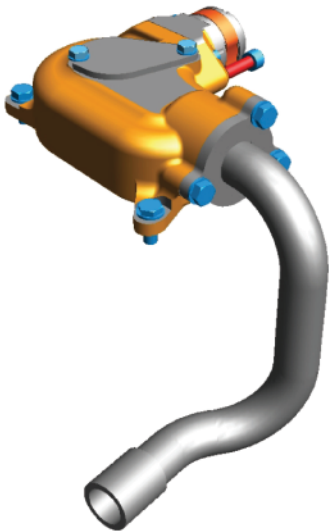


360 View

SPECIFICATIONS

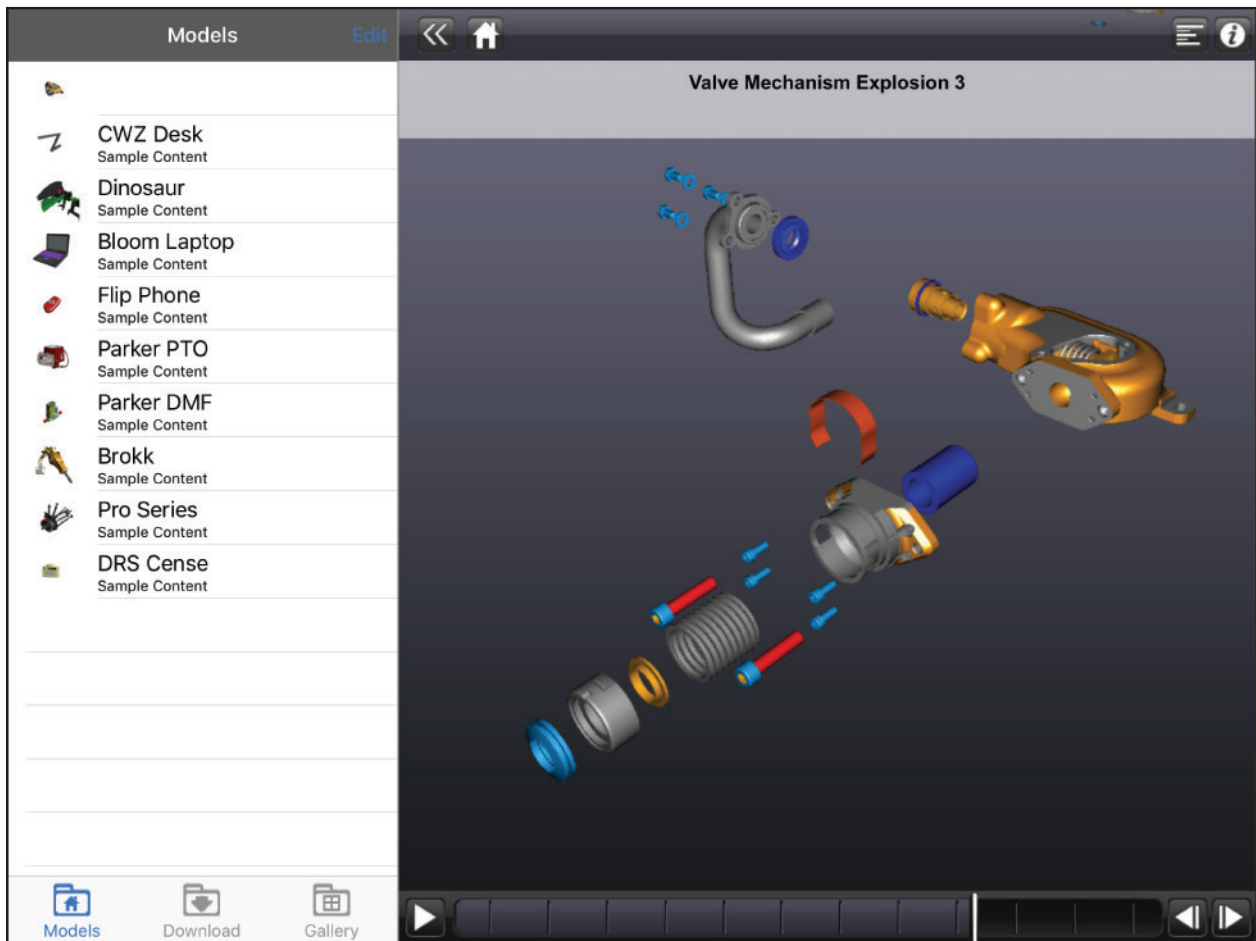
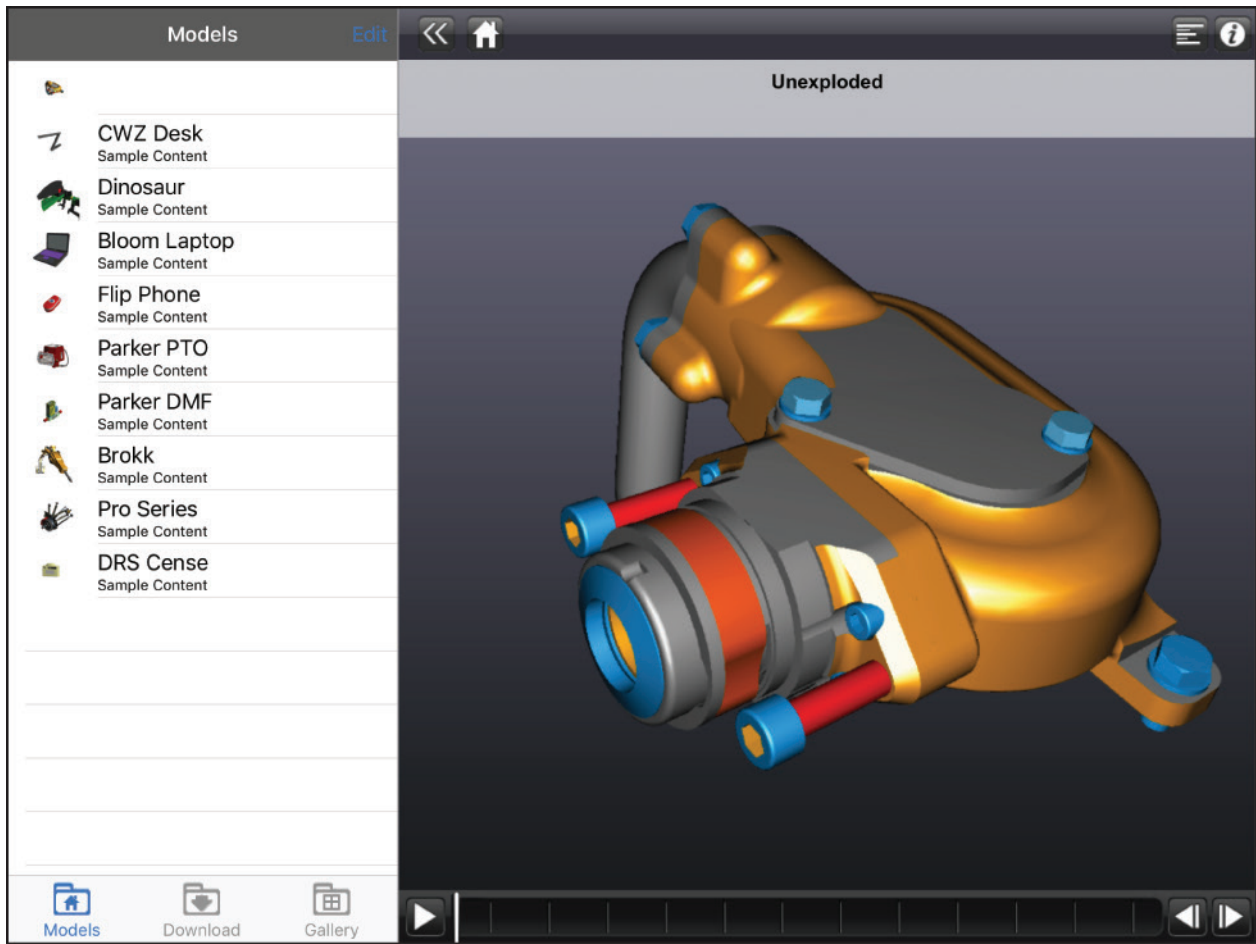
Please ask us for more details about the Dellner Bronze, Silver and Gold service. If you have special needs we also offer customized service contracts.

Tip: Tap image to rotate



To preview full 3D model







Addiva AB graphic profile + digital marketing (<http://addiva.se/>)

Addiva is a tech consultant company based in Västerås, Sweden. At Addiva I've been working as an Inhouse Art Director. During this period I managed and updated their graphic profile including their homepage, magazine, all prints, media, photography and much more. Today Addiva is noticable on google and has really good ranking.

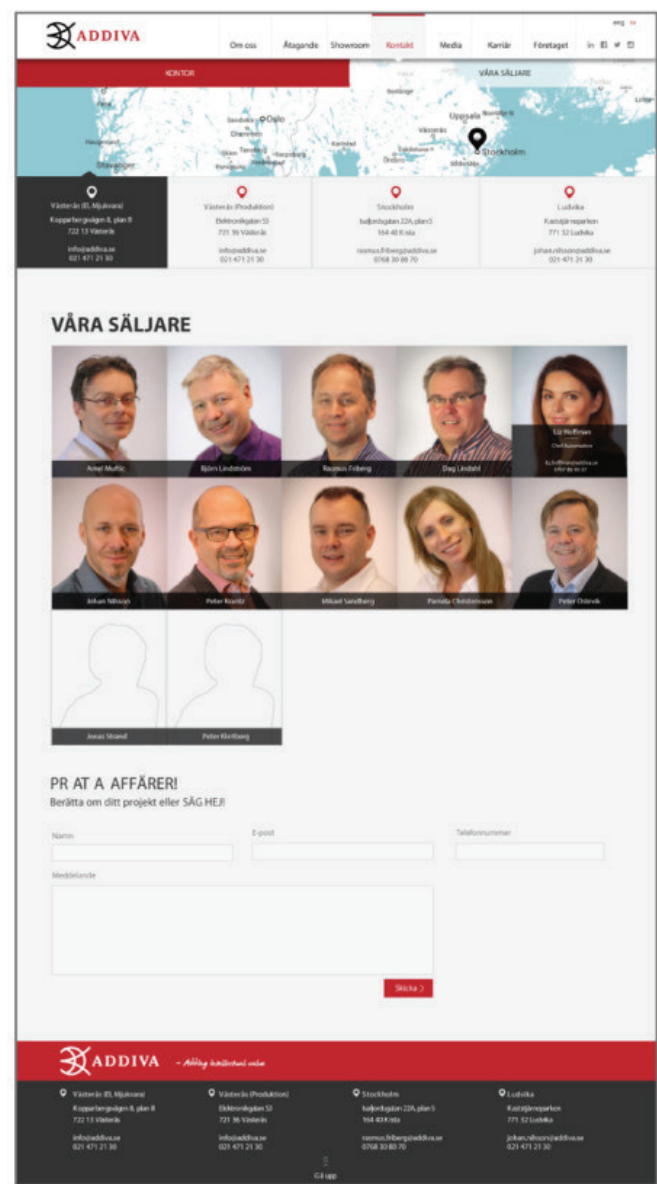
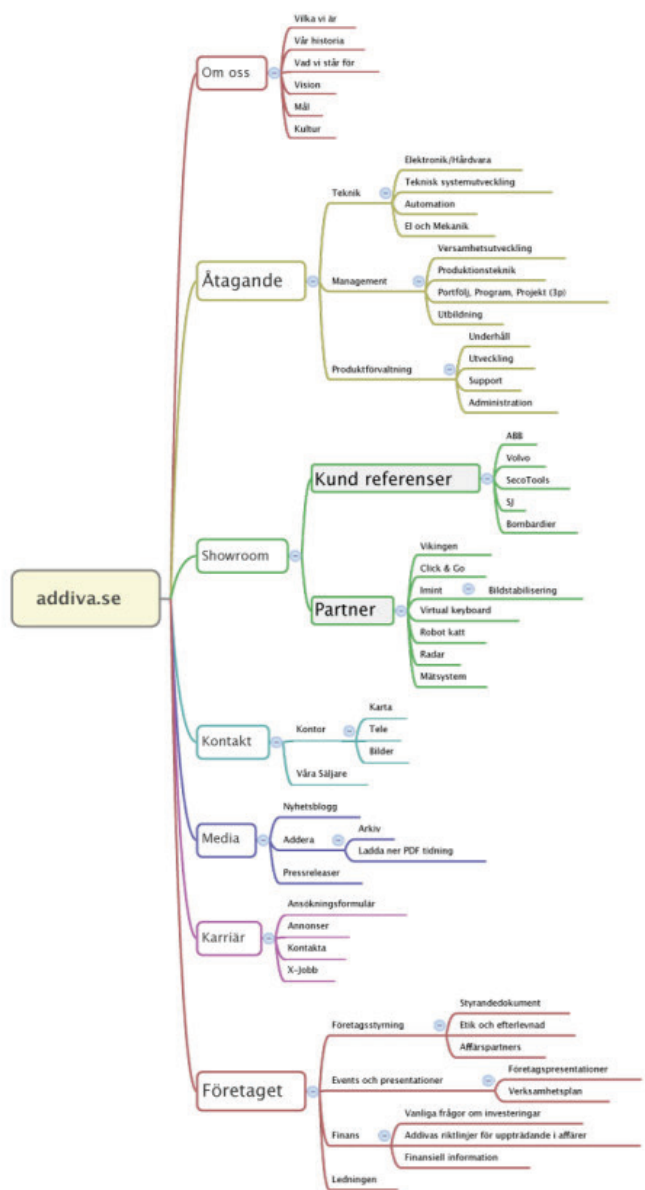
Addiva AB website

- Test and interview regular and potential users;
- Developing personas and writing scenarios;
- Concept (flow diagram and data model concepts);
- Wireframing;
- Hi-fi prototype;
- Collaborate with the developers during implementation;
- Regularly consult product owners and developers along the way to ensure that the solution is feasible.

Note: This webpage was developed by students for a short period of time and some elements and functions are not followed fully according to my prototypes.



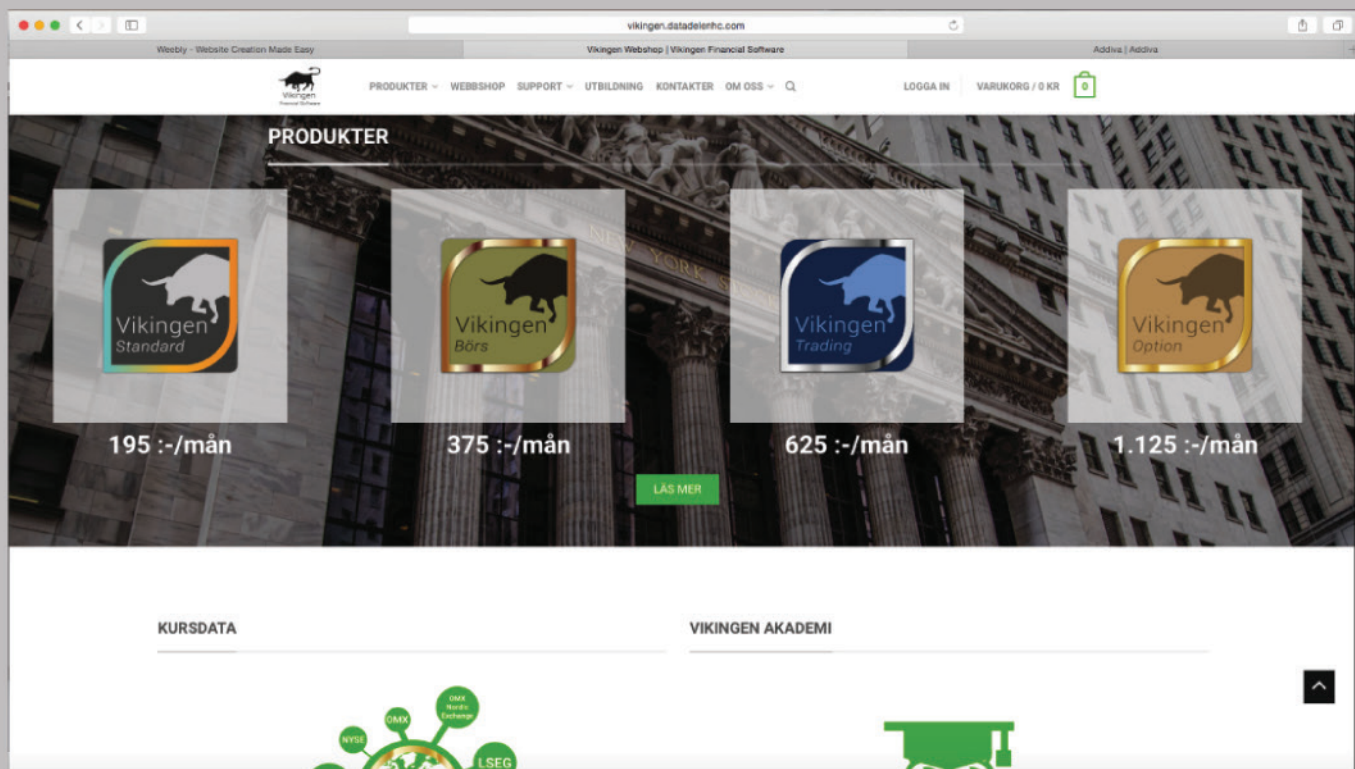
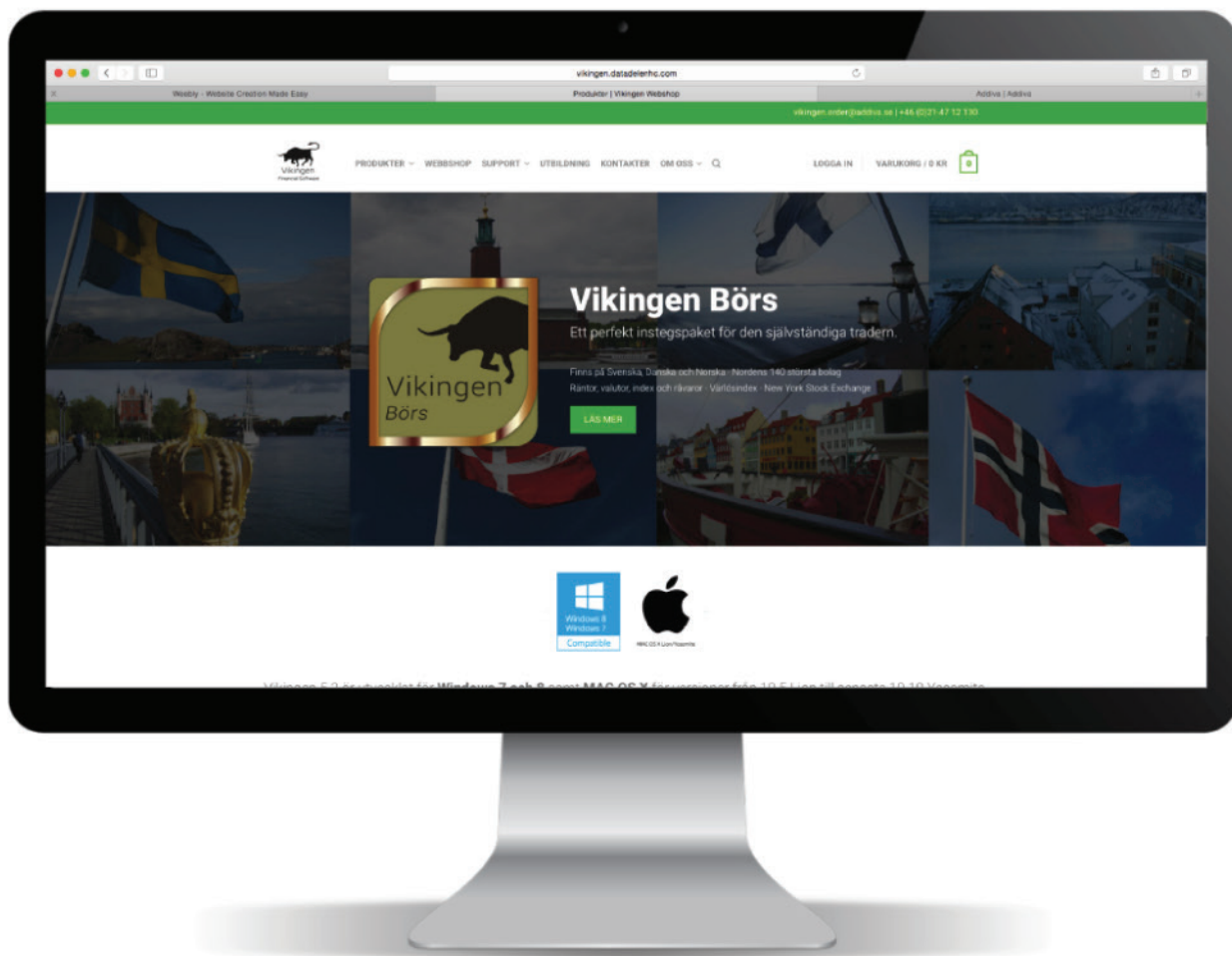
Structure and hi-fi prototype



Before updated version



RANDOM





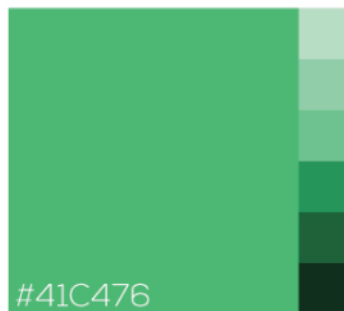
Cumula
Trading App



Cumula
Gaming App



Cumula
Tournament



Nexa Font

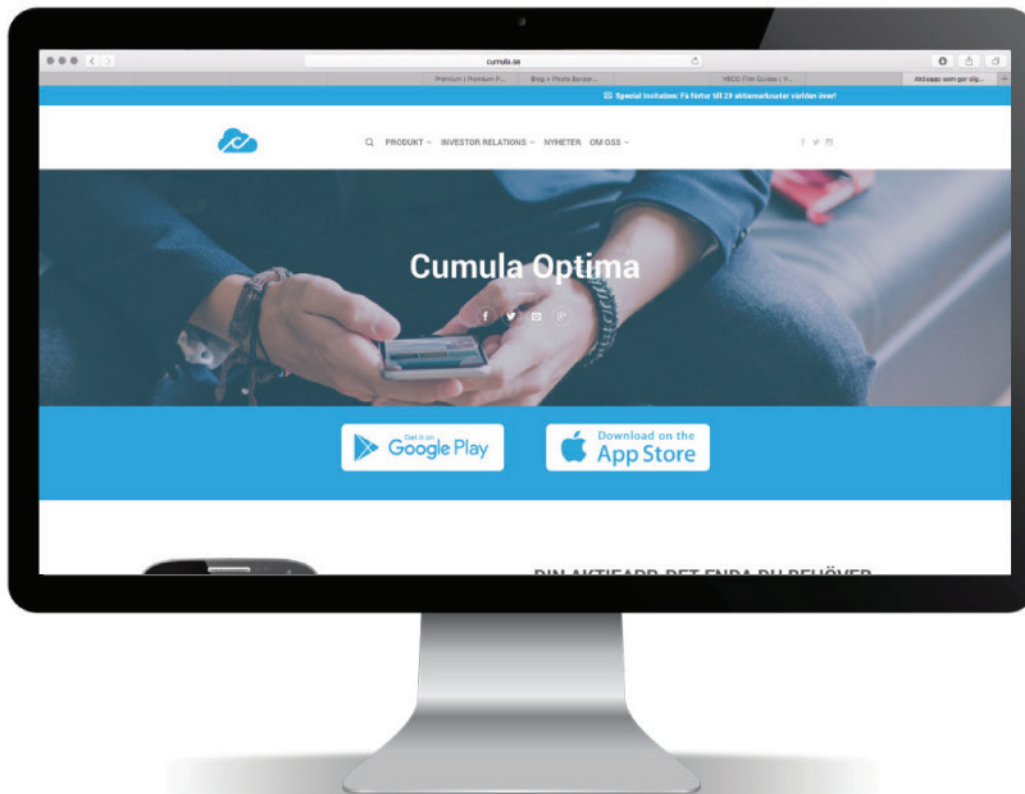
Nexa Book
Nexa Heavy

Nexa Light
Nexa Light Italic

Nexa XBold

ABCDEFGHIJKLMNOPQRSTUVWXYZ
abcdefghijklmnopqrstuvwxyz
#1234567890





DIN AKTIEAPP. DET ENDA DU BEHÖVER.

DU ÄR BARA NÅGRA STEG BORT PÅ DIN RESA TILL AKTIEMÄSTARE.

Cumulas aktieapp Cumula Optima fyller tre syften. Att göra aktier enkelt. Att göra aktiehandel mer lönsamt. Och att se till att fler människor än tidigare börjar handla med aktier. Med stöd av Vikingen Financial Softwares unika teknologi förpackar Cumulas aktieapp beprövade analys- och strategialgoritmer till tydliga köp- och säljsignaler för dina aktier.

Det du inte trodde fanns finns nu förpackat i en enda aktieapp.

Jag vill lära mig handla med aktier. [VISA MIG!](#)

[Nyemission! Klicka här för att teckna.](#)



Work in progress

Project Dashboard | Analyze | **Pattern Matching** | News (1) | Data Import | Project RC2744

AddTrack has been updated. Please restart client. | Configure | Support

Toolbox
 Number of Within TimeRex time to events (seconds) - subsequent event (seconds)
 0

Number of Within TimeRex time to events (seconds) - subsequent event (seconds)
 0

Event
 Group Event
 Group Time
 Time Range
 Interval
 Share Results

Create new pattern

Mode	Name	Pattern
✓ Auto	Door	 Duplicate previous action Choose new action 15 mins Share
Start	Boogie	
Start	Boogie	
Choose mode	Write name	Drag icons to calculate events

Bombardier Transportation | Pen filled writing tool - F... | Victoria Ben-Chivar - Out... | Rising Icons (53): Mig... | Vimeo, Your Videos Belon... | Google Translate

https://elsadev.addiva.se

ELSA ENTERPRISE
Engineering Logistics Support Analysis

Projects | Equipment | Maintenance | **BOMBARDIER**
The evolution of mobility

Choose theme | Start theme

Equipment

- ElectricEngine - Migration (Temporary, Replace):
- Software programming - Toolmanufacture: Soft...
- 03.10.02.01.01.02 - Focon Electronic Systems A/S
- 03.10.02.01.04 - Focon Electronic Systems A/S: P
- 03.10.02.01.05 - Focon Electronic Systems A/S: P
- 03.10.02.01.06 - Focon Electronic Systems A/S: P
- Wheel set - DfE: Aleksandar
- Table bolts - DfE: Bolts - Table ex supp
- Table legs - DfE: Legs - Table ex supp
- Table nuts - DfE: Nuts - Table ex supp
- 03.08.02.01 Tables example - DfE: Table supplier
- 03.08.02.01.01 Tabletop - DfE: Tabletop - Table e
- 03.10.02.01.01.01 - Focon Electronic Systems A/S
- 03.10.02.01.01 - Focon Electronic Systems A/S: P
- 03.10.02.01.02 - Focon Electronic Systems A/S: P
- 03.10.02.01.03 - Focon Electronic Systems A/S: P
- HPG-01 - HPG: ADD-225

Showing 21 of 21 matching items

Search on Part # and Denomination

FMEA

1 Failure Mode | 2 | 3 | 4 Recovery Action | 5 | 6 | 7 | 8

1 Failure Mode: No.

Prevention/Control

Prognosis

Maintenance

4 Recovery Actions

Isolation device (s)

Resettable functions

Other information

Work Project: ELSA Demo (ELSA Demo Project teständring) / Analysis Fleet: | Logged in as: Victoria Ben-Chivar (victoria.benchivar)

